

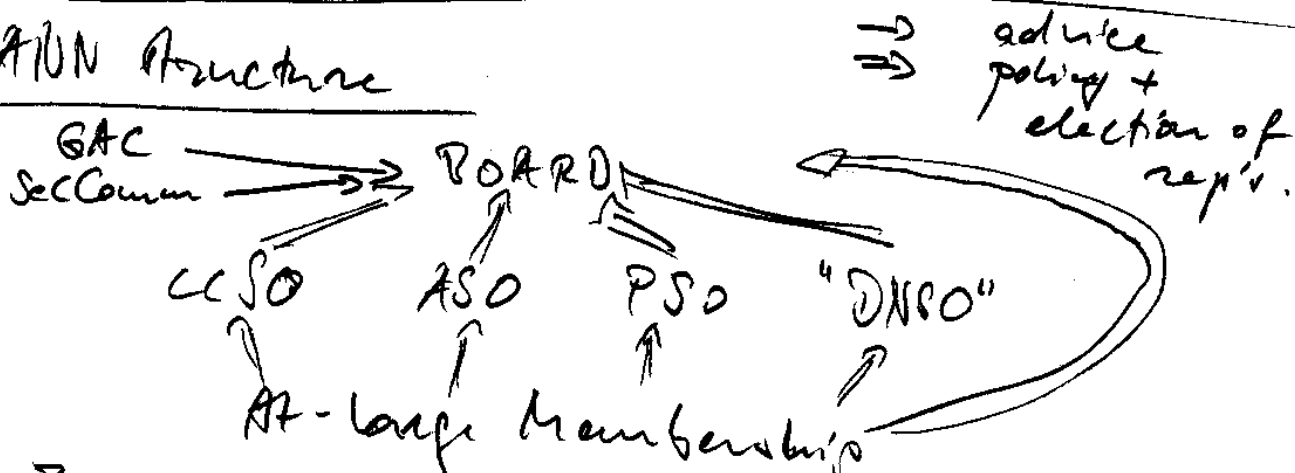
Problem: An at-large membership which works on actual policy input would cannibalize the supporting organizations' BAs. Wanted

Solution:

Formally dissolve BAs, and make them part of an ALM.

member of interested individuals!

### ICATON Structure



- Board as manager of consensus process which continues to happen in SOs.
- SO councils elect board members
- ALM elects board members
- ALM elects rep's to SO councils, where these reps have a vote on policy, but not on board seats
- ALM as some kind of a ripper - BA, with own board representation
- ALM to be managed by Staffer, lead by elected representatives
- Funding from all SOs?